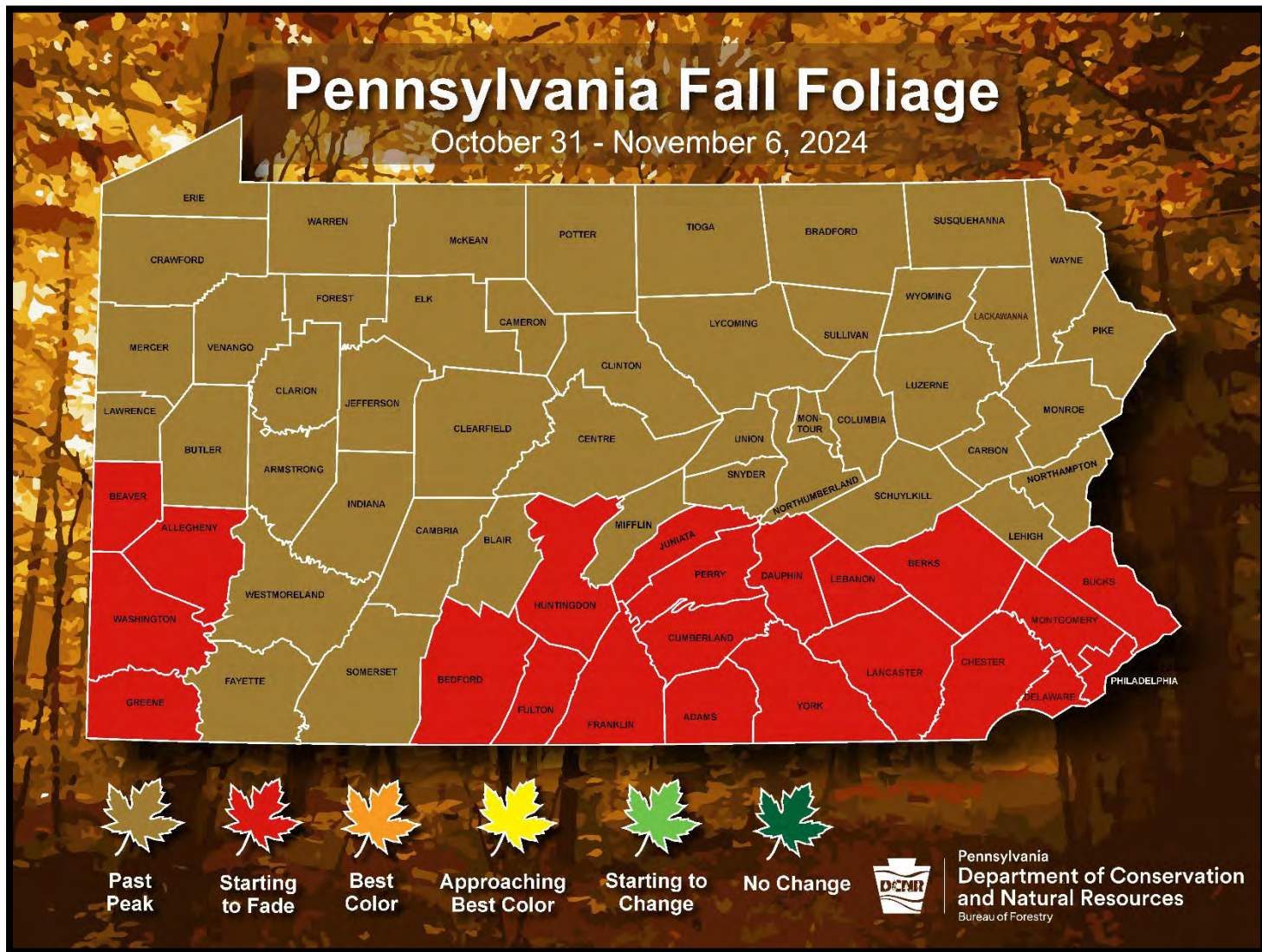


Pennsylvania Department of Conservation and Natural Resources
Bureau of Forestry

PENNSYLVANIA WEEKLY FALL FOLIAGE REPORT

October 31 – November 6, 2024



To predict peak season from the colors, use these guidelines:

- Dark Green/Little to No Change= peak is *three weeks to a month* away
- Light Green/Starting to Change= peak is *approximately two to three weeks* away
- Yellow/Approaching Best Color= peak is *approximately one week* away
- Orange/Best Color= foliage is *peaking this week*
- Red/Starting to Fade= still some nice color but won't last more than *a few more days*
- Brown/Past Peak= all or nearly all color is *gone*

Statewide Fall Foliage Overview

The prolonged dryness, cold nights, and some windy days have taken many of the leaves that remained on Pennsylvania's trees. Despite these factors, there is still plenty of fall color in the Commonwealth's southern tier, especially in oak, beech, and hickory forests. Please read below for details in the sixth (and final) PA Fall Foliage Report for 2024.

Northwestern Region

The district manager in Cornplanter State Forest District (serving Warren, Crawford, Erie counties) reported that oaks continue to be the main source of color in northwestern Pennsylvania. The hillsides are dotted with rustic browns and darker reds indicative of the oak species. Except for a few scattered maples and hickories, most of the other species have already displayed their best coloration and have dropped their leaves. Shorter days and predicted cooler temperatures for this weekend will hasten the remaining color changes. Late fall has arrived but the opportunities to enjoy a fall woods walk or romp in a big pile of leaves are still plentiful in Pennsylvania. Don't miss this last chance to catch the fall colors in the northwest until next fall.



The last of fall color in Anders Run Natural Area, Cornplanter State Forest. (photo by S. Laskowski)

Northcentral Region

The Tioga County service forester said that most leaves have fallen in the district. Other than some brown and russets in the oak woods, the 2024 fall foliage season is over.

Foresters in Elk State Forest (Elk County) and Susquehannock State Forest (Potter, McKean counties) reported that fall foliage season is effectively over, aside from sporadic pockets of oaks, beech, and poplar that are still showing some fall color.



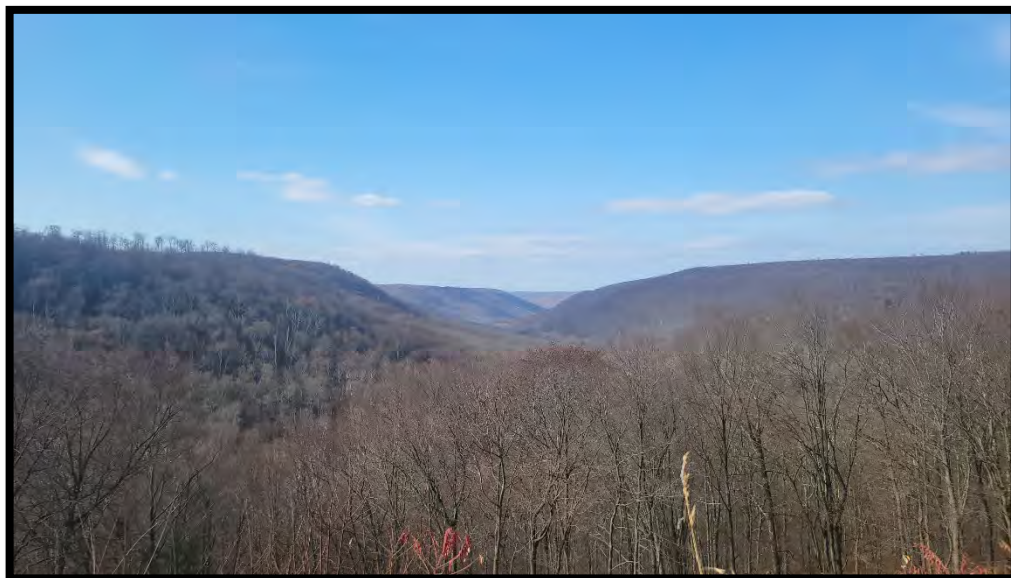
Last gasps of bright, autumn shades in Elk State Forest from Salt Run Vista on Ridge Road. (photo by S. Johnson)



Final stages of fall color in Warren County looking over the Allegheny River. (photo by C. Stelter)



Last color at Halls Run drainage, Noyes Township. (photo by L. Greenaway)



Pleasant Stream Valley, Loyalsock State Forest. (photo by J. Jordan)

Foresters in Tiadaghton State Forest (serving Lycoming County) said the region's fall foliage season has ended, except for some subdued brown hues from oaks.

Foresters in Moshannon State Forest (serving Clearfield County) and Loyalsock State Forest (serving Sullivan, Bradford, and eastern Lycoming counties) indicated that the season has ended in the regions, with most leaves down.

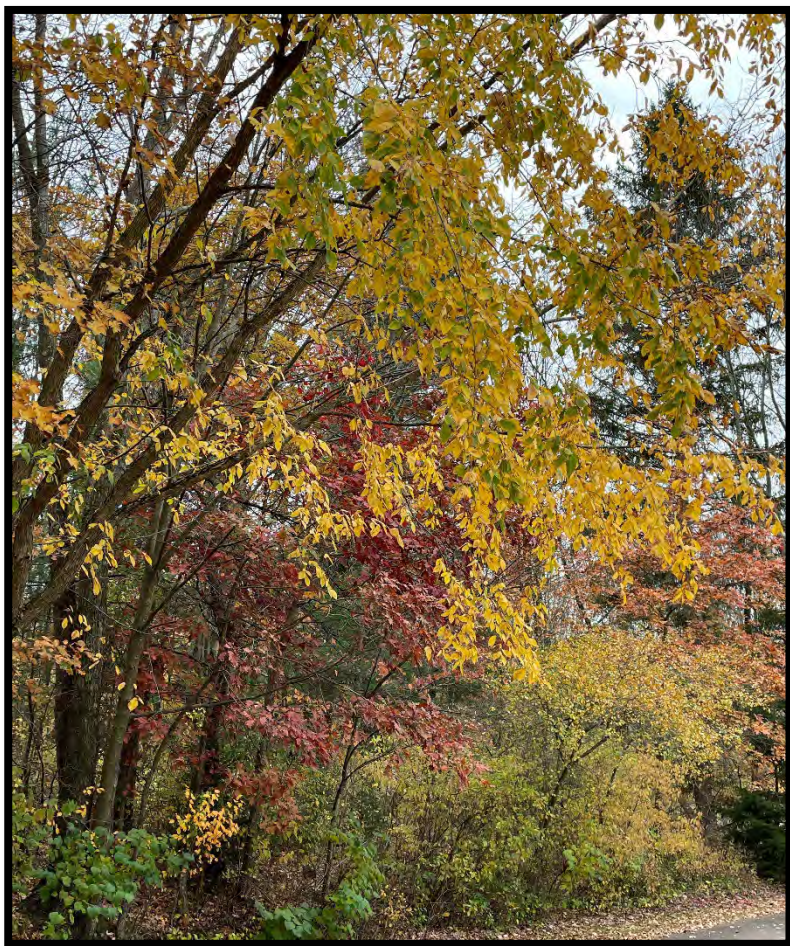
The Clinton County service forester serving Sproul State Forest District reported there are still some leaves to see at lower elevations, but Sproul's color has mostly passed. A few auburn, orange, and brown oaks can be observed on slopes along the river. The last remnants of color in the region will be found at Bucktail Natural Area and Route 120.

West-central and Southwestern Regions

The Armstrong/Beaver/Butler County service forester serving Clear Creek Forest District reported that this year's surprisingly long and vibrant display is ending throughout most of west-central PA this week. Although colorful maple leaves are mostly on the ground, oak-hickory forests are continuing to stand out. Oak trees have changed to scarlets and browns, which makes up most of the fall color left on the trees. Many pin, scarlet, and white oak trees seem an especially vibrant red this year. Hickory and elm trees are adding pops of gold and yellow to the landscape, as well. Raccoon Creek State Park in Beaver County is holding on to some nice color, so it's a great stop in west-central Pennsylvania to soak up the last of the autumn show!



View from a vista on Pipeline Road, Tiadaghton State Forest. (photo by J. Jeffries)



Foresters in Forbes State Forest said visitors to the Laurel Highlands will notice fading colors of late fall. A visit to an oak forest, which retain their leaves later than many species, is the best opportunity to view the last beautiful colors. Many oaks continue dropping their leaves. American beech, another species with persistent leaves, continues to show yellow and tan.

West of the Laurel Highlands in parts of Allegheny, Fayette, Greene, Washington, and Westmoreland counties, visitors should expect to see many leaves falling this week. Visit Ryerson Station State Park in southwestern Greene County for a late fall hike and some of the final fall foliage viewing opportunities for this year. A drive along the winding country roads of Greene and Washington counties will provide viewers with beautiful hillsides of maples, hickories, yellow poplar, and oaks in late fall color.

A yellow elm stands out against a deep red oak tree at Moraine State Park in Butler County. (photo by J. Pierce)

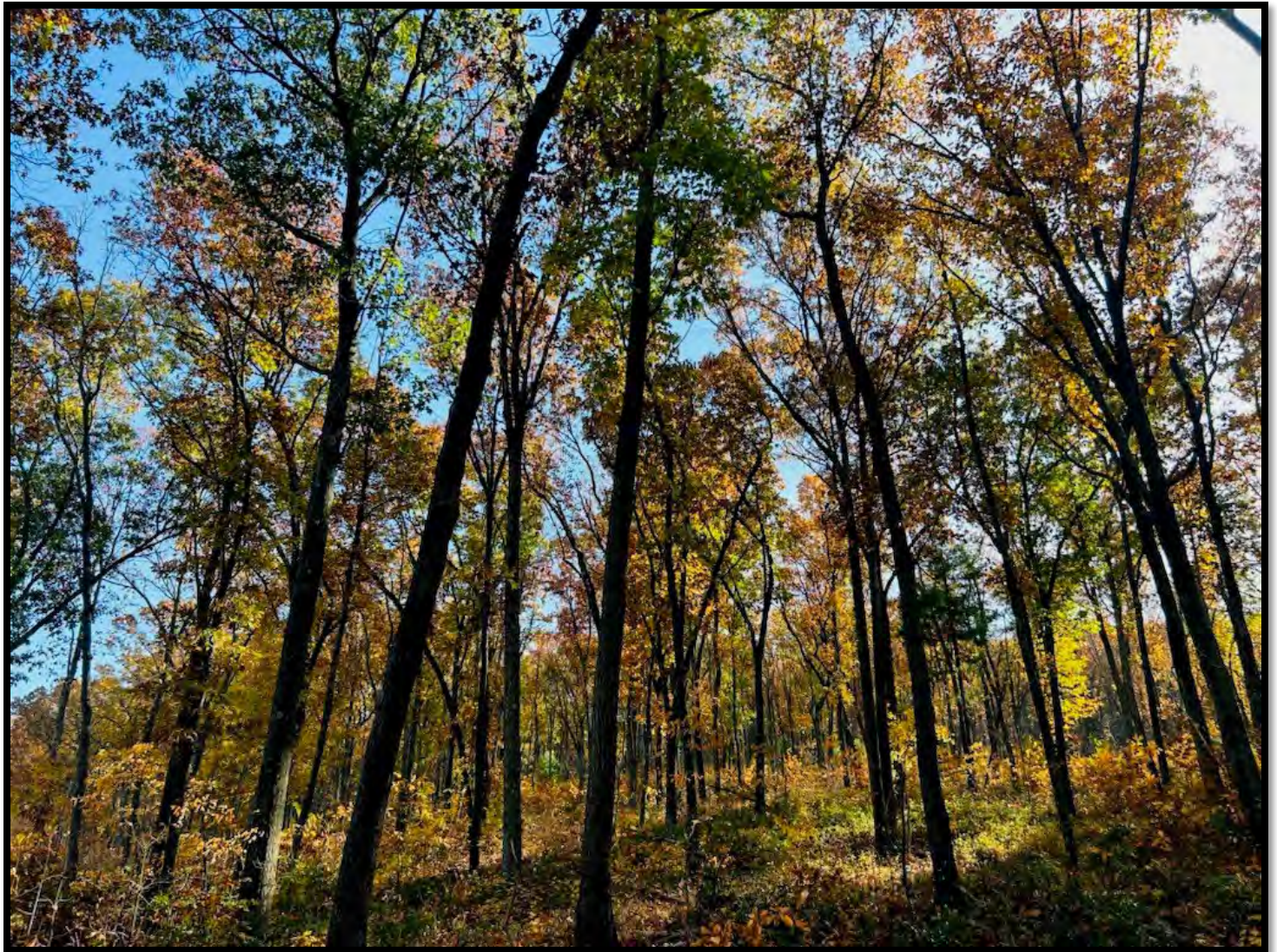


The last of fall color on Laurel Mountain. (photo by C. Wentzel)

Central and Southcentral Regions

Foresters in Gallitzin State Forest representing Indiana, Blair, and Cambria counties said peak color in Gallitzin State Forest and surrounding areas has passed, with many leaves dropping over the weekend. Oak, beech, and aspen are a few species that still have some leaves. This is likely to be the last good weekend to see fall foliage throughout the district.

The Carbon/Schuylkill County service forester serving Weiser State Forest District said most of the region has jumped the fading phase and gone straight to past peak. A few scarlet oaks and white oaks are still showing good color, but most oak leaves are brown/down. A few bright specimen trees can be observed at the Roaring Creek and Taylorsville tracts, but most color has passed.



Pretty fall color at the Ned Smith Center, Millersburg, Dauphin County. (photo by A. Brought)

Forestry staff in Dauphin and Lebanon County said the region's fall color is fading. Hickories, oaks, witch hazels, and a few maples are still clinging to color but won't last much longer with the dry conditions. In the valleys, silver maples and sycamores are offering some interesting shades of yellow and burnt orange, respectively. A day trip to the Mt. Gretna area should still afford some views of pretty foliage through the weekend.

Foresters in Bald Eagle State Forest (serving Union, Snyder, and Mifflin counties) said after a stunning display across the district, most color has faded. While most trees are now bare, a few spots with good color remain. Some oaks are still hanging on to their foliage with a rusty brown hue along with some maples in lower elevations.



Late stage foliage at Winklebleck Vista, Bald Eagle State Forest. (photo by K. Runner)

Rothrock State Forest ranger staff reported that the district (serving Huntingdon and parts of Centre County) forests are fading. Leaves that remain are looking good in shades of yellow and red. Oaks have finally come around and are showing attractive red colors. Jo Hays Vista on Route 26 is home to numerous chestnut and red oaks that are showing nice color, in addition to a view of Happy Valley that shows numerous patches of color holding on, despite recent winds. Although peak color has passed, a drive through the district from southern Huntingdon County through southern Centre County will still reveal some pretty scenery.



The beautiful colors of Rothrock State Forest, Trough Creek Division, on full display at sunrise. (photo by R. Reed)

The Perry/Juniata service forester serving Tuscarora State Forest District said the region's fall colors are fading with leaves dropping fast. Good weather this week will afford a few final views of pleasant color on oaks and hickories.

Foresters representing Buchanan State Forest (serving Fulton, Bedford, Franklin counties) reported the region is fading and quickly losing leaves with the windy conditions. The upcoming weekend will likely be the last good chance to see fall foliage before it's gone. Most of the brilliant colors have disappeared, but oak ridges are still providing some color.

The Cumberland/Franklin County service forester representing Michaux State Forest noted some lingering color on oaks and blueberry in the southern part of the district but fading conditions overall. Some attractive remaining color can be found around Old Forge Picnic Area.



Fading colors at Bark Road Vista, Sideling Hill Division of Buchanan State Forest, Fulton County. (photo by K. Ewan)



View from Buzzards Rock. (photo by Michaux State Forest staff)

Northeastern Region

Foresters in Pinchot State Forest District said fall foliage season is essentially finished in the district. Isolated oak stands are still showing a bit of color, as are the occasional beech, hickory, or maple.



The Pike/Monroe County service forester serving Delaware State Forest District indicated the season is effectively over in the region. Area visitors can still see a bit of color in low-lying places and some parts of the Delaware Water Gap National Recreation Area.

Southeastern Region

The Bucks/Lehigh County service forester serving William Penn State Forest District said the area is mostly past peak with a few pockets of color in some locations.

Attractive color remains in Lancaster, Chester, and Berks counties but leaves are falling quickly due to the extended dryness and recently windy days.

Farther east, pleasant fall hues can still be found in Bucks, Montgomery, Philadelphia, and Delaware counties, but most foliage is expected to drop soon.

A visit to any of the region's state parks will offer some last glimpses of fall color and the sweet smells of autumn.

A still beautiful maple at the Evansburg field office, William Penn State Forest. (photo by H. Nowotarski)