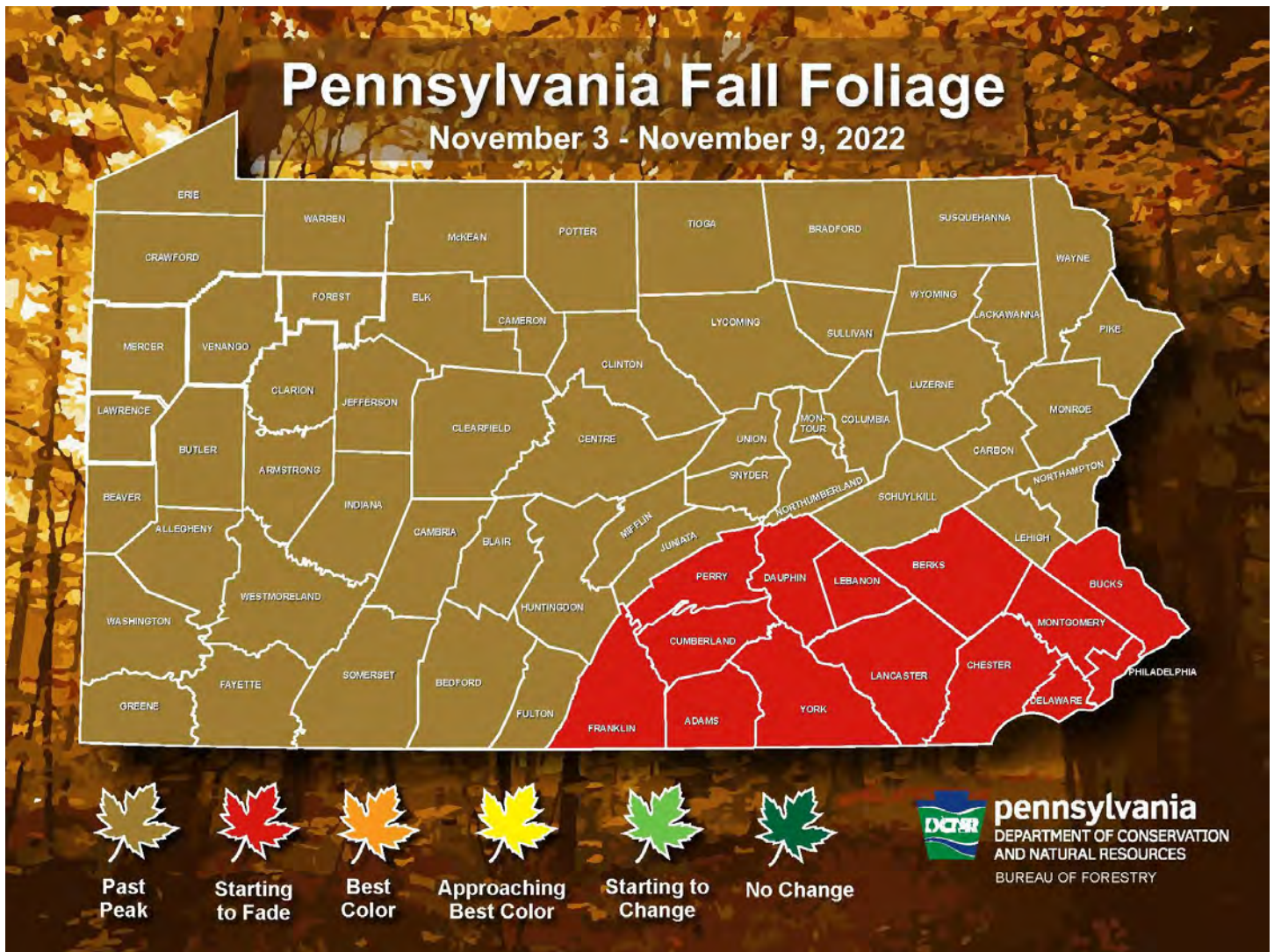


Pennsylvania Department of Conservation and Natural Resources
Bureau of Forestry

PENNSYLVANIA WEEKLY FALL FOLIAGE REPORT

November 3 – November 9, 2022



To predict peak season from the colors, use these guidelines:

- Dark Green/No Change= peak is *three weeks to a month* away
- Light Green/Starting to Change= peak is *approximately two to three weeks* away
- Yellow/Approaching Best Color= peak is *approximately one week* away
- Orange/Best Color= foliage is *peaking this week*
- Red/Starting to Fade= still some nice color but won't last more than *a few more days*
- Brown/Past Peak= all or nearly all color *is gone*

Statewide Fall Foliage Overview

It has been a great year for fall color in Pennsylvania, with most fall foliage reporters describing the best color they've seen in years. Pockets of vibrant color remain in the form of hickories, oaks, and beech, but the last glimmers of autumn are upon us. Sightseers should target southeastern counties this week for a few last views. Read below for more details in the final PA Fall Foliage Report for 2022.

Northwestern Region

The district manager in Cornplanter State Forest District (Warren, Erie counties) reported that many trees in the northwest corner of Pennsylvania have lost or are losing their leaves, as the fall foliage season draws to a close. There is still a scattering of russet brown and burnt orange from oaks and late maples, providing a last glimpse of fall color.



Still a bit of color along the Allegheny River near Emlenton, Venango County. (photo by T. Ryen)

Northcentral Region

The district manager in Susquehannock State Forest (Potter, McKean counties) said fall foliage season is over in the region.

Foresters in Loyalsock State Forest (Lycoming, Sullivan counties) said most of the district is bare now. There are still some leaves on the oaks in the Little Bear area south of Barbours, but these leaves are coming down fast.

The Tioga County service forester said the area is past peak, with only dull colors hanging on some oaks. Most leaves are on the ground and fall foliage season is over.

Many remaining leaves in Tiadaghton State Forest fell last week, leaving only isolated pockets of oak, hickory, and beech color.

The Clinton County service forester (Sproul State Forest) reported a sense of melancholy with the falling leaves and the end of the season. Oaks are about the only trees retaining leaves. For a last gasp of fall, visit Bucktail State Park in Clinton County for a few last glimpses of autumn scenery.



Few leaves remain on trees in Clinton County. (photo by L. Greenaway)

The Elk County service forester reported that the season is over in northern Elk and Cameron counties, with nearly all leaves on the ground.

West-central and Southwestern Regions

The Mercer County (Clear Creek Forest District) service forester said the leaves are mostly down in the western end of the state from Clarion to Mercer County. A few maple leaves are still hanging on, displaying yellow. Leaves are plentiful on oak trees, but most of them are brown. The scattered brilliant colors seen last week are nearly all gone.

In Forbes State Forest District, the education specialist said some lingering fall colors can be seen throughout southwestern PA, however peak foliage for the entire region is past. Leaves continue to fall and with recent rains, many trees are bare, closing what was a vibrant season for color.

In Gallitzin State Forest District (Blair, Indiana, Cambria counties), most leaves are down with a few areas still displaying some modest color on beech, oak, and hickory.

Central and Southcentral Regions

In Bald Eagle State Forest District (Mifflin, Snyder, Centre and Union counties), forests are mostly bare, but sporadic oak stands still have some muted fall color.

The Perry/Juniata County service forester (Tuscarora State Forest District) reported a still pleasant sightseeing experience as crops are harvested with brilliant fall colors in the background. Although colors are fading and leaves are dropping, some trees are still holding vivid leaves. With good weather expected for the weekend, visitors can catch some attractive views before the leaves fall.



Interesting contrast between forest edge and fall harvest, Juniata County. (photo by L. Book)

Foresters in Buchanan State Forest (Fulton, Bedford, Franklin counties) reported that fall color is quickly disappearing in the region. A few maples are hanging on to some yellow, but remaining leaves on oaks are a dull brown.

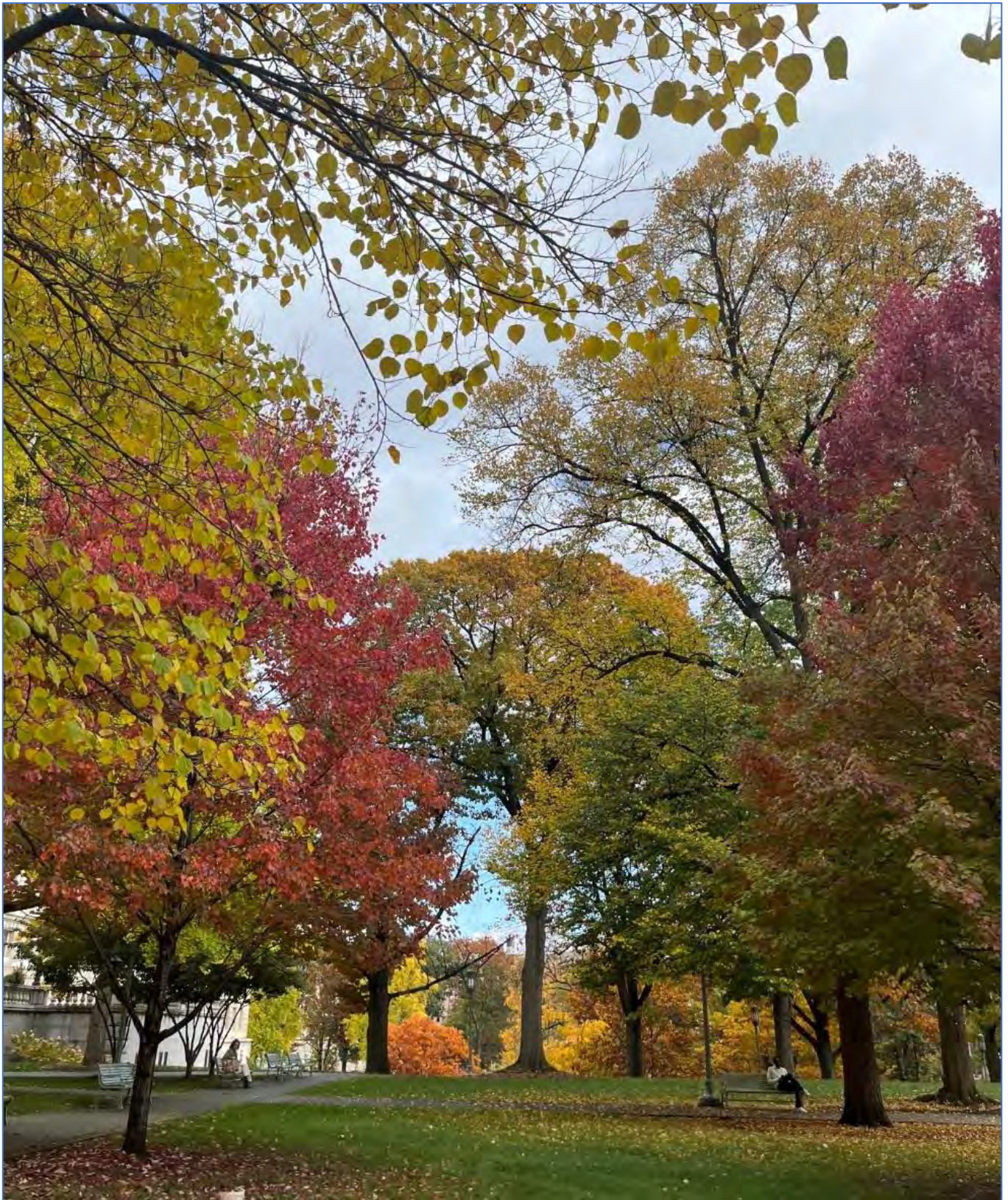
The Clearfield County Service Forester (Moshannon State Forest) said spotty pockets of good color remain in the oak-dominated forests of the Black Moshannon Division. Elsewhere, the maples, cherry, and aspen have lost their leaves. Oaks are muted yellow and brown with some understory blueberry still a scarlet red. This is an especially good time to see the fall-flowering witch hazel with its yellow flowers dotting the understory. Motorists will see the last remnants of color along Route 504 through the Black Moshannon Division. Looking south offers excellent views of the Bald Eagle Valley and Bald Eagle Mountain in the distance.



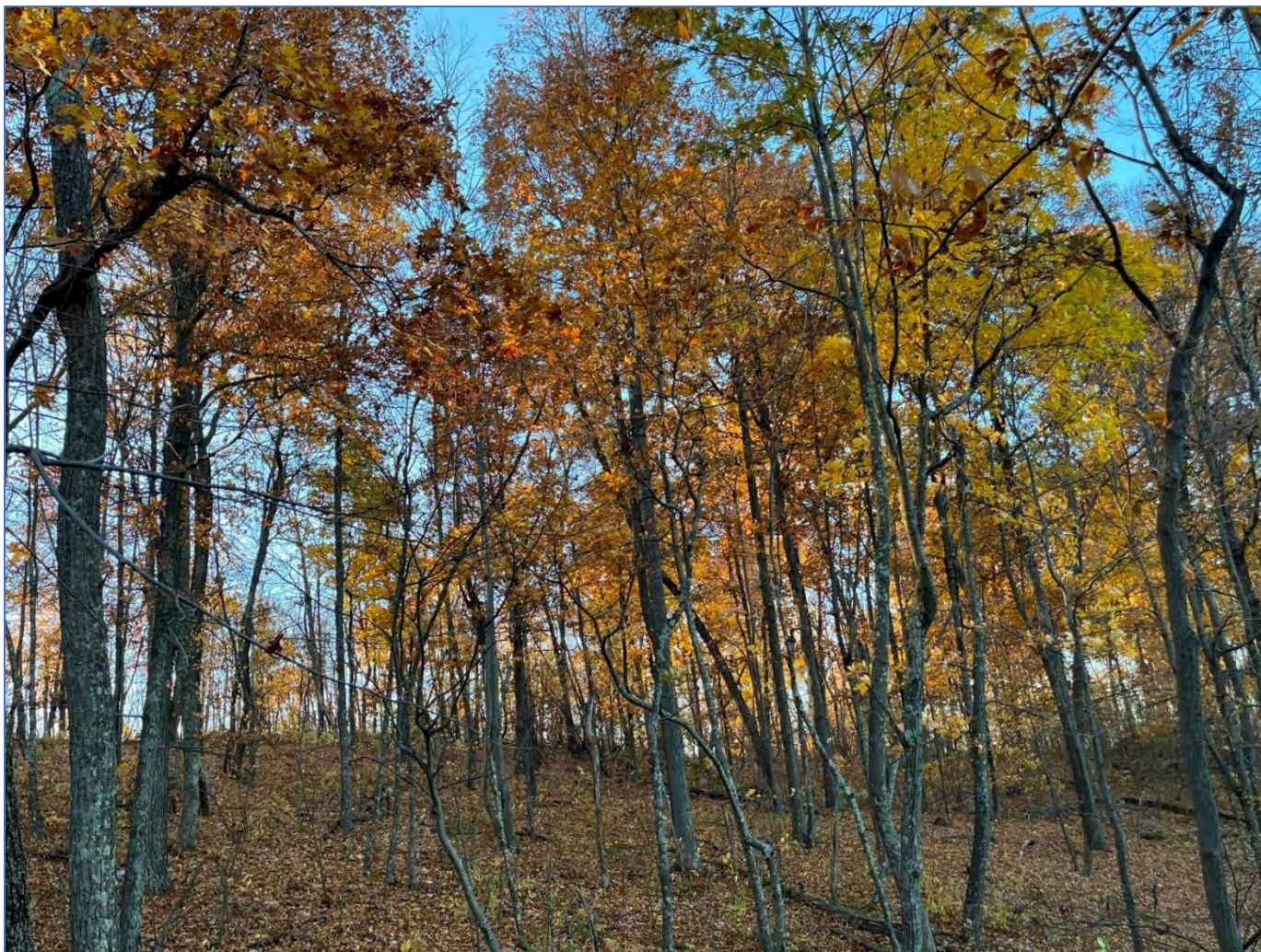
Last color on oaks along Route 504, Black Moshannon Division, Moshannon State Forest. (photo by R. Conrad)



Last color in Allen's Valley, Buchanan State Forest. (photo by K. Ewan)



Gorgeous colors at the state capitol on 11/1/22. (photo by R. Reed)



Colorful mix of hickories and oaks on top of Round Mountain near Trough Creek State Park. (photo by R. Reed)

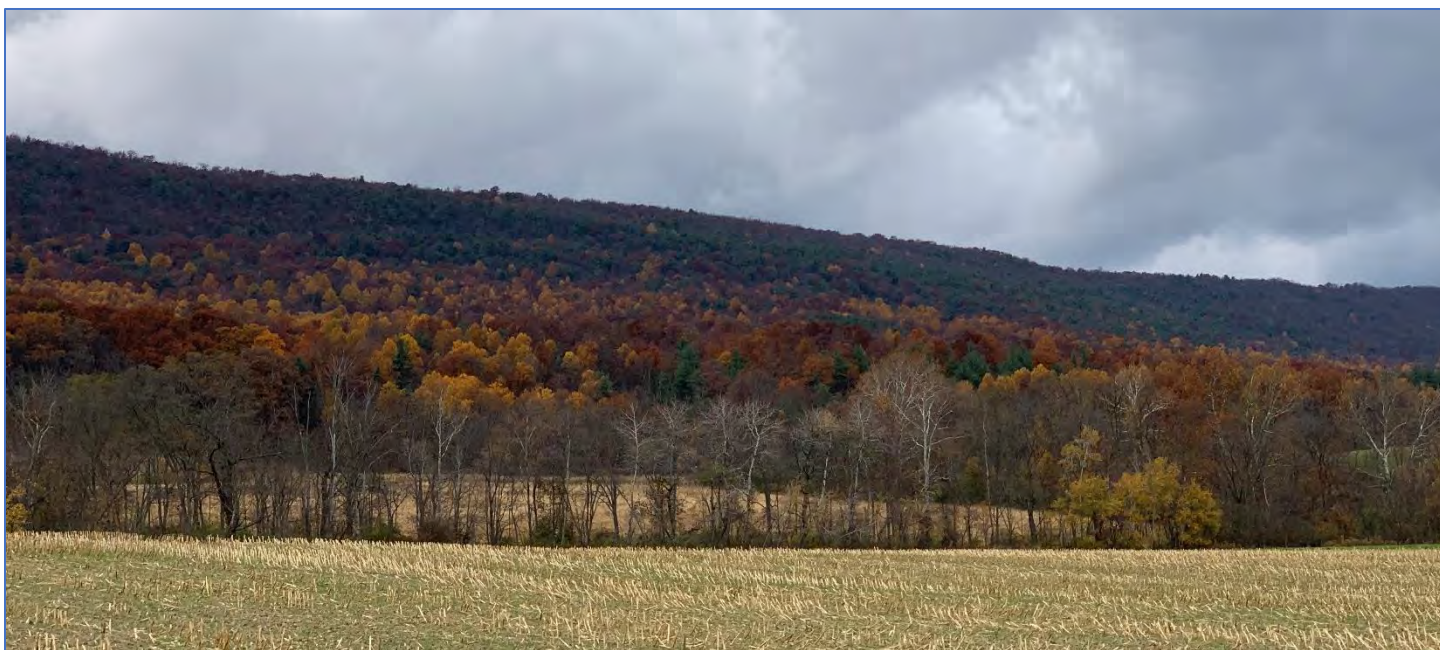


Vibrant hickory. Trough Creek Division. (photo by R. Reed)

Rothrock State Forest staff said the season is essentially over in the northern half of the district (north of Huntingdon). The southern half of the district near Trough Creek and Raystown Lake still retains some pleasant color, but it won't last long. Bright yellow hickories are especially beautiful, along with oaks ranging from burgundy to orange.

The education specialist in Michaux State Forest said fall foliage is past peak in the district. There are still occasional pops of yellow on a growing sea of muted red, orange, and brown. The best color this week will be found in the southern halves of Adams, Franklin, and York counties.

The Dauphin/Lebanon County service forester said there are still some nice colors to observe, but many leaves fell over the weekend. About 50 percent of the leaves are still on the trees, consisting of mostly oak, with a few maples and hickories hanging on.



Tussey Mountain near Marklesburg. (photo by J. Thompson)

Northeastern Region

Foresters in Pinchot State Forest said Susquehanna, Wayne, Wyoming, Lackawanna, and Luzerne counties are all past peak with few leaves remaining, overall.

The Delaware State Forest (Pike, Monroe counties) service forester said recent rain and wind have significantly reduced the number of leaves on trees. All species have changed color and are rapidly shedding their leaves. Oak and beech are still holding leaves. The best area to see the remaining fall color is southern Monroe County. Areas along Blue Mountain have the most leaves remaining. Views south of the mountain into the Lehigh Valley will reveal the most color.

Southeastern Region



Warm fall color at Glen Providence County Park. (photo by K. Kehres)

The Lancaster/Chester County service forester reported a wide range of conditions in the William Penn State Forest District. Northern counties in the district (Northampton, Lehigh) are past peak and Berks, Montgomery, and Bucks are fading. The best color in the region for the forecast period will be Lancaster, Chester, Philadelphia, and Delaware counties, where oaks and beech are most vivid. Sightseers should consider a visit to Neshaminy, Benjamin Rush, White Clay Creek, or Ridley Creek State parks to find attractive fall color in the area.